

Boating & Water Safety CHECKLIST

Make sure you're OK to go!

REQUIRED ON BOARD...

Boater Safety Course Certificate

Anyone born on or after Jan. 1, 1989 must pass a boater safety class to operate a motor boat in Wisconsin and carry a boater education card.

Valid registration decals displayed

Wearable PFDs

Personal flotation device for each person on board

Throwable PFD

on boats 16-26 ft.

Type B-I fire extinguisher

Horn, whistle, or bell

Navigation lights in working order

Paddle

Also, for PWCs:

Engine cut-off switch

This partial checklist is taken from the *Handbook of Wisconsin Boating Laws and Responsibilities* as a quick guide for Bone Lake boaters and their guests. Refer to the Handbook for all requirements for boating. Pick up a Handbook at the Bone Lake boat landings kiosks and at Wilkins Bar and Resort.

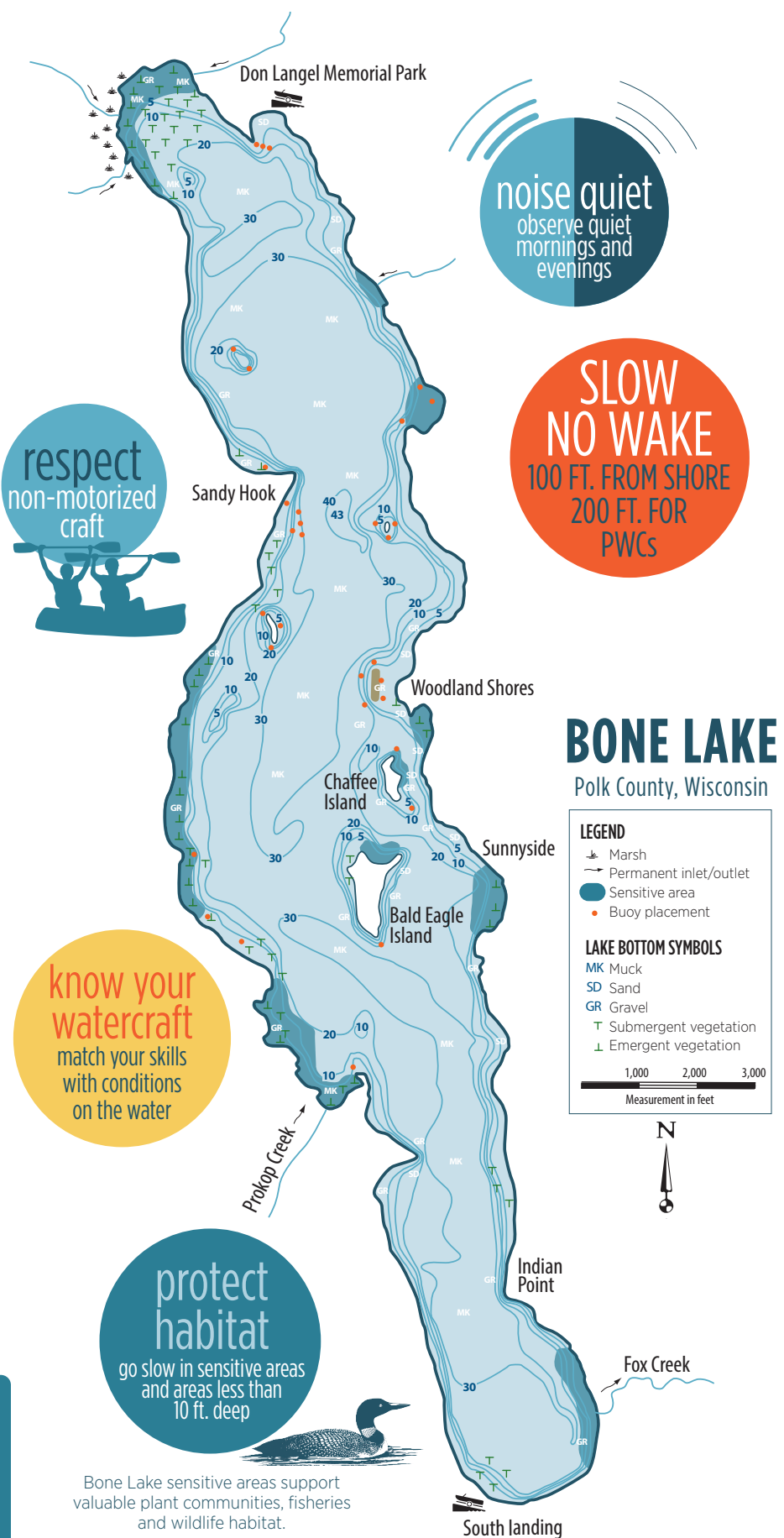


Produced by:
Bone Lake Management District
www.bonelakewi.com
Design: Karen Engelbretson, KJE Design LLC

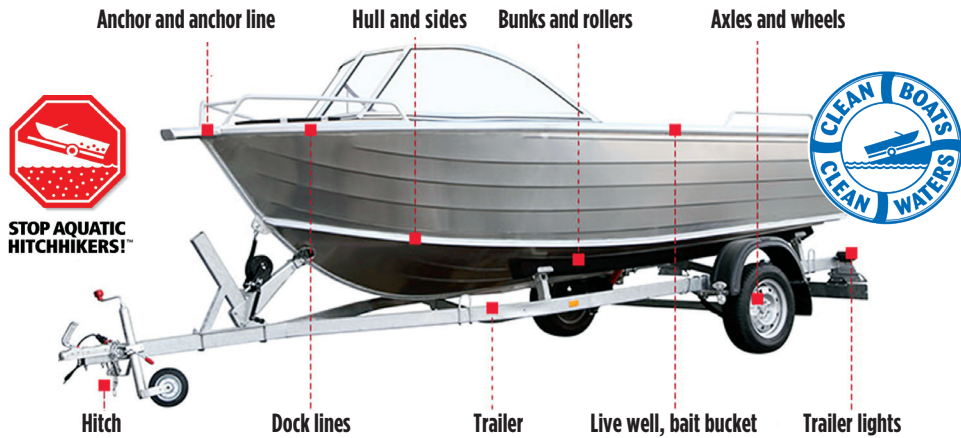
All rights reserved

MAY, 2021

Map is for information only, not for navigation.



Clean your boat and equipment to prevent the spread of aquatic invasive species!



Before launching and before leaving a body of water:

- Inspect boats, vehicles, trailers, and equipment.
- Remove all attached aquatic plants and animals.
- Drain all water from boats, vehicles and equipment.
- Never move plants or live fish.

When leaving a body of water with small organisms like zebra mussels or spiny water fleas, do the following:

- Drain motor, bilge, live well, ballast tank and other water-containing devices before leaving the access.
- Clean with hot water at 140°F and high pressure spray for 10 seconds to each spot; or,

- Clean with hot water at 120°F and high pressure spray for 2 minutes to each spot; or,
- Spray with 2 Tbsp. household bleach per gallon of water. Use eye protection and follow label cautions. After 10 minutes rinse live well with water, if sprayed with bleach.
- Dry everything for 5 days or wipe with a towel before reuse.

IMPORTANT: Dispose of unwanted bait in the trash, not in the water or on land. Buy minnows from a Wisconsin licensed bait dealer.

DNR TIP LINE
800-847-9367
 Voice or text

Sheriff Non-Emergency
715-485-8300
 24 hr

Deputy Tyrel Hanson
 tyrel.hanson@co.polk.wi.us

EMERGENCY 911

State of Wisconsin: Section 30.715 WI Act 16 prohibits launching a boat or placing a boat or trailer in navigable waters if it has aquatic plants or animals attached.

Polk County Ordinance 29-11: prohibits launching or operating on a public roadway any boat, boat trailer, or hunting, trapping, fishing, or boating equipment, including canoes, lines, anchors, nets, decoys, and waders if aquatic plants or invasive animals are attached.

PLEASE DON'T POWERLOAD
 Use your trailer winch to load watercraft at Bone Lake landings.

**BE COURTEOUS.
 BE SAFE.**

**ENJOY BOATING
 BONE LAKE.**

