



Bone Lake Newsletter

Bone Lake — Once called Onondogacona which means lake of small pines

SPRING 2013

WHAT'S INSIDE

Chairman's Letter | Page 2

Recycle | Page 2

Another Bone Lake Eagle has Needed Help | Page 3

Get an Extra \$100 | Page 4

Bone Lake Survey | Page 4

Septic Grants | Page 4

Bone Lake Frogs | Page 6

Meet the Red-Headed Woodpecker | Page 7

Aquatic Plant Management | Page 8

Invasive Species | Page 9

Fireworks, boat parade, ice out? | Page 10

Comments? Suggestions? Contributions? Contact karen@kje.com

www.bonelakewi.com

Time is Running Out to Get Your Subsidized Shoreline Buffer Garden!

By Dave Smith, Bone Lake homeowner

More is better than less, unless, of course, we are talking about the runoff of phosphorus* into Bone Lake.

A little known stash of cash can help you reduce phosphorus runoff into Bone Lake AND create a beautiful garden at the same time. But you need to act early in 2013 to take advantage. It's really pretty easy to do.

In 2011, I had a 135 ft. X 35 ft. buffer garden planted along my waterfront. The best part: **The Bone Lake Management District covered 70 percent of the cost**, because the garden absorbs most of the phosphorus runoff from my lot before it enters Bone Lake. The garden is gorgeous and useful. I didn't lift a finger, except to write the check for my 30 percent share. It's such a great deal I almost felt guilty taking it.

There is more money available for additional projects through a grant from Wisconsin DNR. But if we don't spend the money in 2013, the grant expires and the money goes away. We could potentially do another twelve projects this year with the money currently set aside.

— continued on page 5

* Phosphorus is the element you remember from chemistry class that acts like fertilizer for plant life in our lake, diminishing water clarity and sometimes turning the lake green. About 40 percent of the phosphorus in Bone Lake comes from runoff.



Dave and Lisa Smith's 35 ft. x 135 ft. buffer as seen from the lake in July, 2012. The buffer was planted in spring, 2011.

Greetings, Bone Lakers...

Spring seems to be in slow gear this year, with the ground under heavy snow cover and the sun hidden behind the clouds for several days. Heaven only knows when the ice will go out. Compared with last year, it barely seems like the same country. I'm sure spring will come and prop up our sagging feelings, but I'm not sure when.

The Bone Lake Commissioners met this morning, poised to begin another busy season, weather permitting. Several run-off projects were discussed. Clean Boats, Clean Waters will operate again.

A watercraft inspection camera will be installed at the south public landing, curly leaf pondweed spraying will be done in a total area of thirty acres (twice the area of 2012) and a new DNR program "Kids Don't Float"

will provide children's life preservers to those who are without, for whatever reason, on a free loaner basis. We will build a well-marked stand at the north landing and DNR will stock it with life preservers. If you need one, help yourself and return it when you leave.

The various committees from last year will swing into action, once the weather improves, to resume their activities implementing the Lake Management Plan. We are extremely fortunate to have so many dedicated volunteers who give so freely of their time and efforts.

The commissioners are sending out a survey of lake residents soliciting your opinions on many issues regarding Bone Lake. I urge you to take a few minutes to complete the survey and mail it back by May 11. Your input is critical as it will guide the District forward, addressing the issues that are important to you. Thank you in advance for your help on this project.

Have an enjoyable summer,

— Bob Murphy, Chairman

Bone Lake Management District Officers and Commissioners

Robert Murphy

Chairman
2051 100th Street
Luck, WI 54853
(612) 822-5187 (Home)
(715) 857-5194 (Lake)
TERM EXPIRES AUGUST, 2013

Sue Schnarr

Vice Chair
14650 42nd Street South
Afton, MN 55001
(651) 436-2179 (Home)
(651) 602-7086 (Work)
TERM EXPIRES AUGUST, 2014

Wayne Leipke

Secretary
2118 Bone Lake Dr. #3
Milltown, WI 54858
(763) 572-1407 (Home)
(715) 857-5591 (Lake)
(763) 439-1407 (Cell)
TERM EXPIRES AUGUST, 2014

Phil Foster

Treasurer
2080C-G20 W. Bone
Lake Dr.
Milltown, WI 54858
(715) 857-5304
TERM EXPIRES AUGUST, 2015

Dick Boss

57 E. Bryan
Little Canada, MN 55117
(651) 484-7375 (Home)
(715) 857-5755 (Lake)
TERM EXPIRES AUGUST, 2013

Ron Ogren

Georgetown TWP
1823 100th Street
Balsam Lake, WI 54810
(715) 857-5632

Brian Masters

Polk County
1547 Hwy 46
Balsam Lake, WI 54810
(715) 485-9855

Committees, Chairs:

Lake Management Plan, Phil Foster
Evaluation and Studies, Bob Boyd
Fisheries, Wayne Leipke
Waterfront Runoff, Alex Chorewycz
Watershed, Ann Miller
Wildlife and Natural Beauty, Karen Engelbretson

Aquatic Plant Management, Bob Boyd, Phil Foster
Clean Boats Clean Waters, Dick Mackie
Communications Committee, Sue Schnarr
Social Committee, Sue Schnarr
Fireworks, Boat Parade, Bone Lake Social Events
Boating Safety & Buoys, Dick Boss

The Bone Lake Newsletter is published biannually for its members by the Bone Lake Management District, Polk County, WI. For reproduction rights, content suggestions and submissions, contact the editor.

EDITOR, DESIGN AND PRODUCTION

Karen Engelbretson | 651-602-9440 | karen@kje.com

COMMUNICATIONS COMMITTEE

Lorraine Boyd, Karen Engelbretson, Wayne Leipke, Lorraine Lunzer, Dick Mackie, Sue Schnarr, Chair

CONTRIBUTORS

Bob Boyd, Alex and Mary Chorewycz, Cheryl Clemens, Brian Collins, Cris Dueholm, Karen Engelbretson, Phil Foster, Brenda Laska, Bob Murphy, Sue Schnarr

ADVERTISING COORDINATOR

Lorraine Lunzer | 715-857-5516 | llunzer@lakeland.wis

It's Easy to Recycle Around Bone Lake

Rather than tossing recyclables in the trash, take advantage of these convenient drop off locations on your way to and from the lake. Cans, bottles (plastic and glass), newspapers, cardboard and magazines can easily be recycled at:

- **St. Croix Falls** – on Highway 8 across from Menards, any weekday.
- **Balsam Lake** – on CR 46 by the Government Center, any day, 24/7.

Thanks to Bone Laker Dave Nelson for submitting this notice.

Keep in Touch

Want stay up to date between Bone Lake newsletters? Sign up for *Bone Lake eNews!* You will receive email notices about aquatic plant management, fisheries, wildlife, and social events, plus meeting notices, general news, and important updates from the Bone Lake Management District.

We respect your privacy; your email address will be used only for Bone Lake messages and not shared with anyone else. And we don't send a lot of messages, just the information you're interested in.

To subscribe to Bone Lake eNews, go to bonelakewi.com and click on the dark blue box on the front page. Once you've entered your information you'll get an email confirmation message. Be sure to reply to that confirmation to complete your subscription. ■

Another Bone Lake Eagle has Needed Help

This year it is an adult which is thought to be a female.

By Carol Adleman

On March 14 I was walking near our house on the north end of the lake when I heard an eagle. This is not unusual as they nest on our property, very near the house. This call sounded very close, however, and eventually I spotted it on the ground about 100 feet from the back of the house. It flapped its wings but could not get airborne.

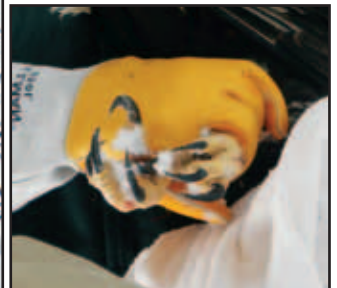
I watched for a while and then called Bob Boyd who gave me the name of a volunteer with the Raptor Center in St. Paul, Ruben Stenseng, who lives near Taylors Falls. After I spoke with him he called the Raptor Center and a woman from there called to get more details from me on the behavior of the bird.

Before long Ruben came to capture the eagle and take it to St. Paul. He walked up to it and it tried to scurry away but Ruben easily got it and knew how to calm it quickly. He wrapped a blanket round it and had my husband throw a towel over its head, too. He left right away to go to the center.

Ruben later said the bird was “active” in the cage on the way, which sounded like a good sign to me. He suggested I call the center after a few days to get an update on its condition, which I did. I appreciated his dedication to helping save these raptors.

I have spoken three times to Greg, who works at the Raptor Center, to find out how this bird is recovering; the most recent update was April 9. It initially was noted that it had significant puncture wounds on its legs which they thought could have been from a territorial fight, not uncommon at this time of year.

The bird is healing well from these injuries but is not 100 percent healed yet. It was diagnosed with too much



lead in its system and that treatment has been completed and levels are lower now. It is also being treated for internal parasites to ensure it has a better chance to be a stronger bird.

Soon the eagle will be moved into a larger flight cage so that it can regain the strength needed to hopefully resume life in the wild again. We believe we will get notification if, when and where it can be released.

The photos here were taken by our granddaughter, China Eubanks. ■

You can find more information about the Raptor Center at their website www.raptor.cvm.umn.edu.



Time is Running Out to Get Your Subsidized Shoreline Buffer

continued from page 1

Here's how you go about getting a subsidized shoreline buffer:

- Contact Cheryl Clemens, Bone Lake's consultant, for a **FREE** on-site evaluation to see if your lot qualifies for the program. If your lot has some slope to it, you might well qualify. Call Cheryl at 715-268-9992 to arrange the evaluation.
- If your lot gets a "thumbs up", Cheryl can give you a rough estimate of total project cost, and what your share would be. There is absolutely no pressure to proceed, but remember for every \$1 you put in, the District/DNR will match approximately \$2.
- If you want to take the next step, Cheryl will work with you to design the buffer garden. She's a talented designer, and she's low key and non-judgmental. The design process is also at zero cost to you.
- You still are not committed, but if you like the design, the next step would be to get bids from three or four landscaping companies, either for just the materials, or for the entire job including planting. In my case, Cheryl even did all the legwork to get the bids!
- Once the bids are in, and if you like the numbers, it's time to make the commitment. Before construction, you write a check to the Bone Lake Management District for your share.

- You also sign a legal agreement that you will leave the garden in place for at least ten years.
- After the installation you do have to water the area to make sure it gets rooted. I hired Noah the neighbor kid who did a great job. After the initial watering, my garden has been virtually maintenance free.

Bottom line: This shoreline buffer program really benefits water quality in Bone Lake, and it's a great way for Bone Lakers to get an awesome landscaping job for a fraction of the total cost. Act now. Call Cheryl today. ■



Above: Lisa and Dave Smith. Below: The Smith's 35 ft.x 135 ft. buffer last July, as seen from their lawn. Inset: Swamp milkweed in bloom.



Bone Lake Frogs and Toads – A Summary of the 2012 Survey

Bone Lake is home to a total of seven frog and toad species. The “true frogs” are those with short, stout forelimbs, thick toes and a rigid skeleton that does not allow for turning of the head; they are often in the genus *Rana*: green frog, leopard frog, and wood frog.

Bone Lake also hosts three species of tree frogs, with sticky pads on their flexible, gripping toes, and the ability to turn their head. They are the gray tree frog, spring peeper and western chorus frog. Also found around the lake is the American toad, an amphibian known for its dry skin, poison glands and stocky build.

Frogs and toads are amphibians that start life as an aquatic egg, develop into a tadpole and mature as an animal equally at home on land as in water. They breathe through their skin and their development is highly dependent on clean water and healthy aquatic and terrestrial habitat conditions.

Learn about Bone Lake’s amphibian population on this page and get the full report of the 2012 Survey of Bone Lake’s Frogs and Toads at bonelakewi.com. Then watch and listen for frogs and toads around your part of Bone Lake. How many of the seven can you find? Where?



WOOD FROG *Rana sylvatica*
Earliest breeding frog in NW Wisconsin, recognized by their rusty-red body color and black mask.
HABITAT: Woodland ponds, marshes and ephemeral pools. Spends the summer in damp woodlands among the leaf litter.
CALL: Sounds like quacking ducks



NORTHERN LEOPARD FROG *Rana pipiens*
Color ranges from brown to green. Suffers from habitat loss and toxins in water.
HABITAT: Ponds, shallow lake margins, wetlands; finds insects in tall grassy areas around water and inland.
CALL: Rubbing a thumb on a balloon



GREEN FROG *Rana clamitans*
Recognized by its lime green mustache. Matures over 4 years time, tadpole stage lasts up to 22 months.
HABITAT: Spawns in littoral zone and depends on shallow habitat with hardstem bullrush. Stays close to a single location.
CALL: Plucked banjo string “glug”



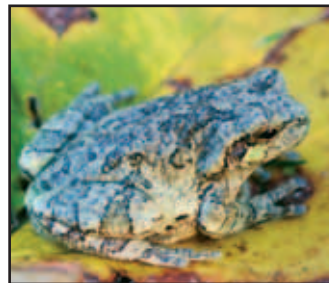
AMERICAN TOAD *Bufo americanus*
Tough and adaptable, found wherever aquatic habitats meet dense vegetation. Tadpoles develop in 40 days as herbivores, then switch to insect prey.
HABITAT: Shallow water, small ponds, high quality habitat.



WESTERN CHORUS FROG *Pseudacris triseriata*
The least often seen. Rusty red to olive green with black streak on sides from front of eyes to hind legs.
HABITAT: Breeds in shallow marshes, boggy sedge meadows, woodland potholes. Lives among the leaf litter in damp forests.
CALL: Rubbing a thumb across a comb



SPRING PEEPER *Pseudacris crucifer*
Bronze-colored, famous for its loud rich singing that signals spring has arrived. They seldom climb into trees, usually seen in forest leaf litter.
HABITAT: Small marshy lakes, woodland ponds, ephemeral pools.
CALL: High pitched peep, sleigh bells



GRAY TREEFROG *Hyla versicolor*
Song peaks when spring air temps reach 60 degrees, also peak of breeding.
HABITAT: Shallow water. Fertilized eggs attach to vegetation and other structures in water. Ephemeral pools, small pond wetlands. Like other forest frogs, hibernates beneath pulpy wood and leaf litter.
CALL: Fast, harsh nasal trill

Maintaining frog populations requires attention to all aspects of the life cycles of this diverse group of sensitive animals. Shoreline buffers of natural vegetation, clean water, intact tracts of forest, protected and secluded wetlands and protection of lowland areas and woodland pools are all important to protecting the frogs and keeping the choruses rich and strong. ■

Source: The 2012 Bone Lake Frog and Toad Survey, by Matthew Berg and Brian Collins, available at bonelakewi.com. The report includes Bone Lake frog families, populations and habitat connections, the full study data summary and results, frog distribution maps for three survey periods and the survey raw data. Frog photos: John Haack; American toad: Brian Collins.

Meet the Red-headed Woodpecker

Birds Around the Lake by Cris Dueholm

It's a bird, it's a plane, no it's a baby Red-headed Woodpecker. The juvenile has a gray-brown head, dirty white patches on the wings, breast and tummy while the back and upper part of the wings area are smoky black. When you see it you don't really think that this is the real Red-headed Woodpecker!

Adults have bright-red heads, white underparts, and black backs with large white patches in the wings, making the lower back appear all white when perched. It's so boldly patterned it's been called the "flying checkerboard." The juvenile will have to go through its first fall and winter and then molt into that beautiful adult plumage!

Red-headed Woodpeckers will leave here, their northern territory, to migrate as far south as Florida. During migration they may be in loose flocks – family groups – and move to find their favorite food of nuts and flying bugs. You'll awake some spring morning to find that they have arrived to thrill you for the summer; then they'll leave during the night in the fall.

Red-headed Woodpeckers live in mature deciduous woodlands and other open forests with dead timber and clear understories, around farmlands, pine plantations, wetlands, and roadsides. They can be in an area one year and may never come back there again, so I am glad to have had them and their babies nearby for the last four years!

Bird Feeders and Bears

Many Bone Lake residents will tell you about their encounters with the area's black bears. As they wake from hibernation, hungry and in search of food, black bears find the common bird feeder "low hanging fruit." They are also attracted to your compost pile, grill, and garbage container.

We need to avoid feeding bears to deter human-bear conflicts. Wisconsin DNR recommends that if a bear visits your feeder, take it down for a few weeks until the bear leaves the area. In fact, it is unlawful to maintain a bird feeder that you know is being visited by bears.

Consider removing your bird feeders for the months of April and May, and bring feeders inside at night or when you leave your cabin for the week.

You can attract birds with other methods when your feeders are unavailable: add a birdbath or nesting box, plant fruiting native shrubs for food and habitat. Find many more ideas at www.allaboutbirds.org.

Both male and female will build the nest but the male does most of the tree excavation with its powerful spike-like bill. The entrance hole is about 2 inches in diameter. They will lay 3-10 eggs in a clutch, have one to two broods per year, and take about 12-14 days to incubate. The young are fed by both parents and then they will leave the nest when they are between 24-31 days old, with the parents teaching them where to obtain their food in the territory.

Their favorite insects are beetles, cicadas, midges, honeybees and grasshoppers. They hammer away at the bark of trees, but also are among the most skillful flycatchers of North American woodpeckers. They will also forage on the ground, and feed up to 30 feet high in trees, sometimes raiding nests to eat nestlings, eggs, and adult birds. They will store acorns, beech nuts, pecans, cherries, corn, and grasshoppers, shifting around the arrangement of these items. Both male and female may stay with one another indefinitely and of course are very territorial during the breeding season.

Since we like to make sure our property is safe from falling dead trees, we are cutting down their homes – that is one reason why we are seeing less of them. It has been calculated that we have a cumulative drop of some 50 percent over this midwest area due to loss of habitat and changes to food supply. So, if you have room and it's not a hazard, you may want to leave part of that old snag tree for them to roost.

Fun facts: Fossils of this bird have been unearthed in Florida, Virginia, and Illinois that have been up to 2 million years old. The oldest recorded red head was 9 years, 11 months old from Michigan. Alexander Wilson from the 1700s coined it the "spark" bird because of the red head that peaks a human's interest in studying birds.

So look and listen carefully in your neighborhood for this boldly-colored bird and its territorial song! ■

To hear recordings of Red-headed Woodpecker calls, check: www.allaboutbirds.org/guide/red-headed_woodpecker/sounds



photo: Brian Collins

Bone Lake Aquatic Plant Management Plan Update Meeting

An Advisory Committee consisting of Bone Lake residents, WDNR personnel and lake consultants met April 6, 2013 in Balsam Lake, WI

The meeting objective was to gather citizen input to guide the update to the Bone Lake Aquatic Plant Management Plan. Participants listened to presentations related to aquatic plant management on Bone Lake, asked questions and provided valuable input.

The Draft Bone Lake Aquatic Plant Management Plan 2013 Update will be available for review May 1 on bonelakewi.com and at the Luck Public Library during regular business hours.

Thank you to these participants:

Judy and Roger Gammel, Cindy Gardner, Ron and Mary Lachenmayer, Karen Engelbretson, Bill Ward, John Spies, Wayne Wolsey, Phil Foster, Alex Chorewycz, Richard Mackie, Tim Killeen, Shelley and Jeff Rose, Bob Boyd.

Advisors:

Alex Smith, WDNR; Mark Sundeen, WDNR; Steve Schieffer, consultant; Cheryl Clemens, consultant and meeting facilitator. ■



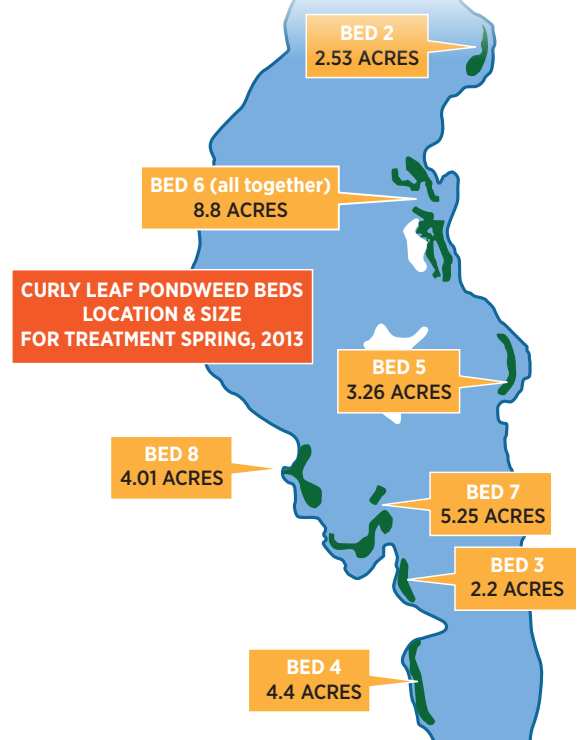
Cheryl Clemens, Harmony Environmental, leads the Aquatic Plant Management Plan review meeting held April 6 at the Justice Center in Balsam Lake. The proposed treatment areas are shown in the map.

Aquatic plant management notice

The Bone Lake Management District is applying for a permit from the Wisconsin Department of Natural Resources to treat 31 acres of Bone Lake with an aquatic herbicide to control the invasive plant curly leaf pondweed. This proposed treatment would occur between April 15, 2013 and June 1, 2013.

The Bone Lake District has been using the herbicide Endothall to treat 4 test beds of curly leaf pondweed on the lake since 2006 and 3 navigation channels since 2009. The 2013 permit application is for treatment of a total of 7 beds of curly leaf pondweed and a single navigation channel. Herbicides are used early in the season at a low dose to avoid harm to native plant species. The APM plan recommended continuing this treatment in order to minimize navigation problems, prevent the spread of curly leaf pondweed, and protect native plant populations. Recent studies suggest that CLP treatment may reduce mid-summer algae blooms.

A map of the treatment areas and a copy of the permit application are available on our web site: Bonelakewi.com or by calling Bob Boyd at 715-857-5495.



Rusty crayfish (*Orconectes rusticus*) an aquatic invasive species, was discovered in Bone Lake last fall. This summer, look along your shoreline for crayfish and see if you can identify any Rusty Crayfish there. For identification keys and a downloadable brochure, go to bonelakewi.com. Keep in mind that we have many native crayfish that are not harmful and should be protected. If you find a Rusty put it in a container with lake water and call Bob Boyd, Cell 715-553-0629. *Adult rusty crayfish average 4 inches in length but often grow to be much larger.*



Watercraft Inspection Camera

The video camera at the north end public landing was operational May 4th of this year providing Bone Lake with 24/7 coverage of water craft launching there.

The camera is positioned to record watercraft that are being launched with vegetation attached. Violations of the ordinance that prohibits transportation and launching of boats and trailers with vegetation attached will be enforced. The camera also serves as a reminder for boaters to check their equipment before launching.

The Bone Lake camera operated through October 18, 2012. There were 10,748 videos captured of which 6,418 were reviewed. Of those reviewed, 1,305 launches were counted, or twenty percent of the videos reviewed. There were no citations or warnings issued last year for vegetation on any watercraft based on video images.

There were four confirmed launches where weeds were seen on the boat going into the water. Where the visibility was clear enough these were reported to Bob Boyd. No citations resulted from these reports as authorities did not view the weeds as significant for a first citation.

A warning was issued to a person who dumped a bait bucket full of leeches into the water off the end of the dock at the north end. One of our sharp-eyed CBCW personnel reported this activity.

A camera similar to our north end camera will be installed this spring at the south end landing. ■



A shot from the north end camera, positioned to view boats and trailers as they launch. A second camera will be installed at the south end public landing this summer.

< The invasive Rusty Crayfish was discovered in Bone Lake last fall. You can help estimate the population. Learn to identify Rustys and if you find one, put it in a container with lake water and call Bob Boyd.

Clean Boats Clean Waters program (CBCW)

Educating boaters about the dangers of aquatic invasive species and how to prevent them from spreading is a major goal of the CBCW program.

Last year CBCW youth had an opportunity to earn some extra money by working in the program. Most of the hours worked are on Fridays, Saturdays and Sundays. Many of the inspectors were relatives of Bone Lake residents and ranged in age from 14 to 18 years.

If you have a family member or friend interested in the 2013 CBCW program contact Richard Mackie at 715-857-5205 or Bob Boyd 715-857-5495. ■



CBCW youth talk with a boater at the north end landing.

Lake Monitoring Team

Members of the lake monitoring team will be out again this summer. You might see them in their blue shirts throwing rakes into the water and looking at the vegetation that they have brought up. They are hunting for any new aquatic invasive species (AIS) and monitoring the spread of curly leaf pondweed.

These volunteers are on the front line of our efforts to detect and/or control AIS in Bone Lake. Without them and our CBCW youth we would not qualify for our AIS grants. It's simple, no volunteers no money.

A number of these volunteers have been on the team for six years. We don't have as many as we started with and could use more help. It's a simple task requiring only a few hours a month on the water. Training and materials are provided. If you have been wondering about how you can help in our efforts to protect Bone Lake, this is one of them.

Curly leaf pondweed, rusty crawfish, banded mystery snail, and Chinese mystery snail are present in Bone Lake, all are invasive species. Let's keep it at four. Call me. Bob Boyd 715-553-0629. ■

KIDS DON'T FLOAT

Life Jacket Loaner Board Station Project

The State of Wisconsin and Wisconsin Department of Natural Resources hosted the 2011 National Association of State Boating Law Administrators conference in Milwaukee in September, 2011.

Bureau of Law Enforcement staff members were made aware of a very successful program in Alaska and several other states where a supply of various-sized life jackets are set up at boat landings. Boaters who forgot a life jacket or had unexpected passengers could borrow the extra life jackets they needed and then return them at the end of their voyage.

> A Kids Don't Float loaner board like this one will be installed at the Bone Lake north end public landing for use this summer.



Alaska started their life jacket loaner board project in 1996 with about a half dozen such stations and currently over 600 are in place around the state. Alaska works with a variety of partners such as scout troops, lake associations, sports clubs, local government entities and others to build and maintain their stations. The Alaska Boating Safety and Education program provides the materials and life jackets. Wisconsin has decided to follow this model.

The Bone Lake Management District has been working with WDNR personnel including Conservation Warden Jesse Ashton to implement this program on Bone Lake. The station will be ready at the north end landing this year from Memorial Day until Labor Day.

The WDNR is providing the funds for construction and the life jackets. Chris Nelson of Nelson Construction Services in Balsam Lake has graciously volunteered to build the unit. ■

BONE LAKE SOCIAL EVENTS

BOAT PARADE/PICNIC

The boat parade and picnic will be held on Saturday, July 6, 2013 at noon, north end landing pavilion. The picnic is not just for the boat parade participants — all Bone Lakers are welcome to attend this event.

We encourage you to begin thinking about your theme and the decorating of your watercraft for this year's parade. Make it a fun, family affair!

From the landing, the parade will travel south, along the western shoreline first, so make certain that your boat is decorated from that side of viewing, which is the STARBOARD, or right side. The parade will leave the landing at 1 p.m.

First prize for the best boat entry this year is a \$500 cash award!

FIREWORKS

We've contracted for this year's fireworks display to be held on Saturday, July 6, 2013. Fireworks will launch from the north end landing about one-half hour after dusk.

The landing will close to boaters for entry/exit at 6 p.m. on July 6 for fireworks setup.

We AGAIN need donations! Without \$10,000 in donations, we'll not be able to provide the display. Make certain this tradition continues for your family and friends! Use the return envelope provided in the newsletter to send your donation or mail to Bone Lake Social Committee, c/o Sue Schnarr, 14650 42nd Street South, Afton, MN, 55001

Donations are accepted at any level, but, requested at:

Sailor For all donations at \$50

Captain For all donations from \$50-\$100

Admiral For all donations over \$100

BOATING FLOTILLA

Weather permitting, we will resume the flotilla of boats at 5 p.m. on Saturday, August 10, 2013, at the sunken island (sandbar). This is the same day as the Annual Meeting. Appetizers and desserts are the fare for this fun filled event!

See you around Bone Lake!

Ice Out... Not

As this newsletter goes to press on April 23, 24 inches of ice remain locked to the shores of Bone Lake. Looks like another record-breaking year — the latest ice out date on the Boyd list is April 27, 2008. Last year, ice out was declared on March 24 breaking the previous *early* record of March 25, 2000. Boyd's Ice Out List was published in the Spring 2012 Bone Lake Newsletter.

YOU'RE INVITED SEVEN DAYS A WEEK

**MAY THROUGH SEPTEMBER
7AM UNTIL 9PM**

**BREAKFAST COFFEE GOLF
LUNCH GOLF BEER
GOLF DINNER DRINKS**

*Help us celebrate our 75th anniversary
with fabulous rates and four new greens!*

COME AND PLAY A ROUND WITH US!

**FRESH AIR
TO SPARE!**



Luck Sport and Marine LLC

*Servicing All Brands Of
Small Engines, ATVs, Snowmobiles, Marine Engines*
Trailer Repair • Welding
Storage & Shrink Wrap • Parts & Accessories



STIHL

**808 State Road 35
Luck, WI 54853
715-472-2075**

Phyllis Bea's of Amery
Antiques • Collectibles • Gifts
Lots of Northwoods Gifts

Featuring unique and many one of a kind gifts and treasures. Something for everyone.

It's what you want and you deserve it!

Guys— Come and check out Dick and Larry's Cave.

845 Hwy. 46 North
Amery, WI
(one mile north of downtown Amery)

**Monty's
SPORTSMANS HAVEN**

Live Bait • Sporting Goods • Tackle
Guns • Ammo • Liquor • Beer
715-825-3326
Cell 715-553-0202
P.O. Box 117, 422 West Main St.
Milltown, WI 54858

**Endeavors
Greenhouse**
& Birders' Select Outlet

Seasonal Poinsettias
Open Year round!
Mums & Houseplants
Our Own Wild Bird Seed!
Annuals & Perennials
Gift Shop!

715.825.GROW Call for Our Retail Hours
125 Industrial Ave., Milltown
just south of town, look for our white arrow signs on HWY 35
A Nonprofit Employer of Adults Living with Disabilities

OLSON SEWER SERVICE

CURT & LENNY OLSON
Owners

2083 100TH ST. • LUCK, WI 54853

715-857-6005 715-857-5863

CWS SECURITY WATCH
Alarm Systems
"Your Eyes While You're Away"

**State-of-the-Art
Home & Cabin
Security Systems**
24/7 Professional
Monitoring

715-483-0083 www.CWSsecuritywatch.com
Ask about our CabinWatch Service!

ICC RESTORATION & CLEANING SERVICES

Is Your HOME in Crisis?

FIRE DAMAGE? WATER DAMAGE? STORM DAMAGE?
WWW.ICCHELPS.COM
24-HOUR EMERGENCY SERVICE 888.739.4289
YOUR TOTAL RESTORATION AND CLEANING PARTNER

SUNNYSIDE MARINA

252 County Road I
Balsam Lake, WI. 54810

715-485-3393
888-4-BALSAM
Fax 715-485-3311

Email: info@sunnysidemarina.net
Authorized: Sales, Service & Storage

WINDOW GENIE
We Clean Windows and a Whole Lot More!

\$20 OFF
Any Service
Over
\$100

Our Menu of Quality Services Includes:
• Window Cleaning
• Window Tinting
• Safety & Security Film
• Pressure Washing
• Deck Clean/Seal
• Gutter Protection
• Gutter Clean-out
• Concrete Clean/Seal
• Tile & Grout Cleaning

Terry Forrest • Amery, WI
715-268-7044 • Cell 715-338-0647
tforrest@windowgenie.com • www.windowgenie.com

IRRIGATION EXPERTS LLC
1043 185th Ave • Balsam Lake, WI 54810
DIVISION OF LAKE SERVICES UNLIMITED

Telephone
(888) 270-1338

E-mail:
lakeservices@lakeland.ws
Commercial and Residential

New Ownership

Wilkins Bar & Grill

- ★ Dockside gas
- ★ Outdoor patio for dining & cocktails
- ★ Dock parking for customers
- ★ New menu items
- ★ Homemade pizza
- ★ Many upgrades

1091 238th Avenue
Luck, WI 54853

715-857-5555

Professional Lawn Maintenance
• Weekly Cutting • Core Aeration • Fertilizing/Liming
• Soil Analysis • Spring & Fall Clean-Ups

Call Toll-Free for more available services and bulk Retail Landscaping Material

**Lake Services
LSU
Unlimited**

1-888-811-5753
www.lakeservicesunlimited.com
1042 185th Ave., County Rd. I • Balsam Lake, Wis.

Milltown Public Library

Hours
Monday 10-7
Tuesday 10-7
Wednesday 10-7
Thursday 10-7
Friday 10-5
Saturday 10-2

www.milltownpubliclibrary.org
715-825-2313

Fresh coffee & free Wi-fi served daily!

Cheese And More
mary wilson
owner

Burnett Dairy Cheese - Autumn
Winery Wines - Fresh Meats

Opening May 1

Nesser Mall
Milltown, WI 54853
715-825-5455

Check us out on Facebook!

Follow the news that affects your home/cabin all year.

**INTER-COUNTY
Leader**

Subscribe to our print or e-edition by visiting our Web site
@ the-leader.net or call 715-327-4236



Sales & Service
TORO - WHEEL HORSE
EXMARK - BRIGGS
HUSQVARNA
ALUMA TRAILERS
715-825-2289
HWY. 35, MILLTOWN, WI

All Hardware Needs and Rental
Balsam Lake Hardware Hank
 Hours: M - F 8 A.M. to 6 P.M.
 SAT. 8 A.M. to 5 P.M./SUN. 9 A.M. to 2 P.M.
907 Frontage • Balsam Lake, WI 54810
715-485-3267
www.balsamlakehardware.com

DIRKS
HEATING & COOLING INC.
Award Winning Service 24/7
 Call toll-free
1-855-Go Dirks!
 (1-855-463-4757)
 BBB A+ ACCREDITED BUSINESS
 Barron-Cumberland and now **Downtown Milltown!**

HAIR'S THE THING
 TANNING & NAILS
 DOREEN GUSTAFSON
 OWNER
 WASHHAIR02@YAHOO.COM

 55 EAST MAIN ST.
 P.O. BOX 303
 MILLTOWN, WI 54858
 CALL FOR APPT.
 1-715-825-3104
 MONDAY THRU SATURDAY


TRUSTED QUALITY CLEANING LLC
 Home and Business Service
 Weekly, Bi-Weekly, Monthly &
 One-Time Cleaning Avail.
TOLL FREE 888-259-6171
 Quality, Excellence & Attention
 to Detail You Can Actually Enjoy!

Milltown Dock & Marine Service Center
 Hwy 35 • Milltown, WI 54858
715-825-3833
 Sales • Parts • Service • Storage
 Mercury-Johnson/Evinrude-Honda-
 Portadock-Portalift
 milltowndockandmarine.com

Blacksmith Shop
 Bar & Grill / Motel
 Beer / Liquor / Food
 Your Host *Bar* 715-857-5679
 Ellen Molamphy *Motel* 715-857-6481
 Balsam Lake, WI **BROASTED CHICKEN**

Van Meter's Meats
 See us for all of
 your grilling needs!
Hours: M-F 8-5:30 • SAT 8-2
715-472-2141


KJE
 KJE DESIGN LLC [design that works]
 GRAPHIC DESIGN AND COMMUNICATIONS
 identity • advertising • direct marketing
 LETTERPRESS PRINTING BUSINESS/SOCIAL
 Karen Engelbretson 651-602-9440 karen@kje.com

Balsam Lake Pro-Lawn Inc.
 Nursery-Lawn-Landscape-Floral
 Full service property maintenance,
 and complete landscape - Design/Install
 Bulk materials available
 916 Badger Drive, next to Hardware Hank Balsam Lake, WI 54810
715-485-3131 Fax 715-485-3377
Greenhouse open for Mother's Day

MAYTAG Home Store
 verizon **Amana KitchenAid Whirlpool**
Stoves Appliance-Plus
 P.O. BOX 127, 84 WEST MAIN STREET
 MILLTOWN, WI 54858
 STEVE QUIST CAROL ZYGOWICZ BOBBI WOLTZ JOE NIEDZIELSKI
 OWNER SALES SALES SERVICE
 PHONE (715) 825-2257 FAX (715) 825-4457 1-888-374-0028
 www.stevesapplianceplus.com

Cafe Wren Open Daily
GARDEN & ART SALE
 Memorial Weekend • May 24-27
 Fri/Sat. 9-5 & Sun/Mon 10-4
 Locally grown plants by
 Tiny Planet Produce & Dragonfly Gardens
 Artwork for home and garden
 calewren.com
 2596 State Hwy 35
 1/2 mile N of Luck, WI
 715.472.4700
 FREE WI

SUBWAY
MIKE & NANCY BURTON
 Owners
 218 MAIN STREET
 PO BOX 364
 BALSAM LAKE WI 54810
 PHONE 715-485-9007

Luck ^{Do it Best} Hardware

Hours
 Mon. - Fri. 8 a.m. - 5:30 p.m.
 Sat. 8 a.m. - 1:30 p.m.
 Sun. Closed
 715-472-2089 Heidi A. Nelson
 110 Main Street
 Luck, WI 54853

CUSTOM NORTHWOOD HOMES LLC
 Bruce Hendricks 671A Pine Lake Lane Frederic, WI 54837 Call: 715-566-0025 715-472-2062
 Kevin Filip Cell: 715-554-0050 715-825-3395 E-mail: rockridgeqtrs@lakeland.wis
 Jim Thomas Cell: 715-554-0075 715-648-5037
FOR ALL OF YOUR BUILDING NEEDS


JONZY MARKET
 Country Convenience Store with:
GAS • GROCERIES • LIQUOR • VIDEOS • BAIT & TACKLE • ANIMAL FOODS • AND MUCH MORE
 Open 6 a.m. • 7 days a week
 Telephone: 715-857-5753
 1043 185th Ave., Cty. Rd. I • Balsam Lake, WI 54810
 We Accept: VISA, MasterCard, Discover • Jeff Traynor (owner)

PASS TRUCKING & LANDSCAPING
 Retaining Walls • Rock Work
 Paving Brick • Patios • Sidewalks
 Sod • Black Dirt • Seed
 Gravel • Sand • Traprock
 Riprap • Lime Rock
 Bobcat • Mini Excavator
 Marvin and Sharon Pass
 1785 80th Street
 Balsam Lake, WI 54810
715-857-5307

Since 1956... Find Out Why
JENSEN FURNITURE
 101 MAIN STREET • LUCK, WI • 472-2487
 www.jensenfurnitureluck.com
Blinds • Draperies • Floor coverings • Furniture