

Bone Lake Aquatic Plant Management Plan Summary

Purpose and Plan Development Process

The Bone Lake APM Plan will guide the Management District in managing aquatic plants by protecting native plant populations, alleviating serious nuisance conditions, and preventing establishment of invasive species from 2008 through 2012. The management strategies were developed based on scientific information, Wisconsin Department of Natural Resources guidance and requirements, and public input. Public input to date has been provided through the results of a survey of Bone Lake residents and an advisory committee that guided plan development. The plan balances a variety of resident concerns while protecting the lake environment as described in the mission statement and goals below.

Mission Statement

Bone Lake is a precious resource and one of the premier recreational lakes in this area. The overall goal of the aquatic plant management plan is to maintain Bone Lake aquatic plants so that they support a healthy lake that offers recreation, sport fishing, clean water, and natural beauty to our children, grandchildren and others for decades to come.

Plan Goals

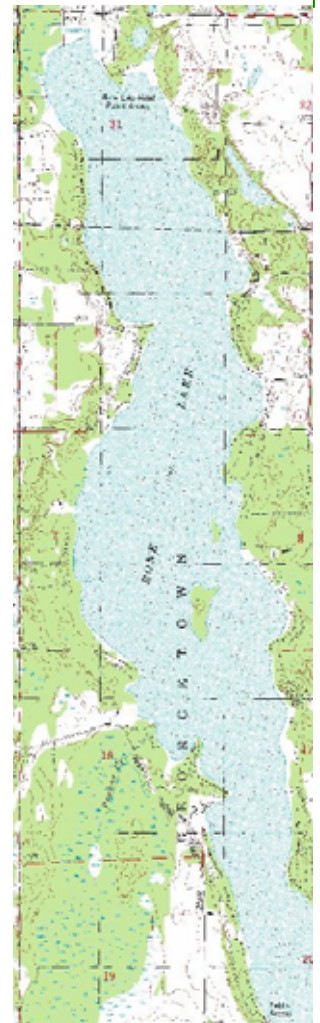
Goal 1. Maintain recreational uses important to lake residents and users including swimming, fishing, and boating while balancing the need to preserve important native aquatic plant functions and their values.

Goal 2. Prevent the introduction of Eurasian water milfoil and other invasive aquatic plants.

Goal 3. Manage curly leaf pondweed to minimize navigation problems, prevent its spread, and protect native plant populations.

Goal 4. Protect the natural functions of diverse native plants including fish and waterfowl habitat, sediment stabilization, protection against invasion by non-native species, and natural aesthetics.

Goal 5. Educate lake residents and visitors about the role of aquatic plants in the lake, the management strategies found in the plan, and appropriate plant management actions.



Major Plan Activities

Preventing Invasive Species



Aquatic invasive species (AIS) like Eurasian water milfoil are a concern to Bone Lake because such plants can cause major ecological damage and create nuisance conditions. Bone Lake has a well-established program to prevent invasion of species like Eurasian water milfoil. It includes a Clean Boats, Clean Waters program at the boat landings to inform people about the need to remove aquatic plants from their boats and trailers. The program also provides other information about AIS using signage, handouts, articles in the newsletter, and updates to the web site.

The strength of the Bone Lake Aquatic Invasive Species program is in its hard-working volunteers. These people work at the boat landings, develop educational materials, and monitor the lake for potential AIS invasion. Volunteers monitor along the entire lake shoreline for Eurasian water milfoil and other potential new invasive species. The aquatic plant management plan includes a new rapid response strategy to quickly deal with the introduction of Eurasian water milfoil if that unfortunate circumstance occurs.

Maintaining Navigation Channels

Navigation channels are common navigation routes for general use. The Aquatic Plant Management Plan Advisory Committee and the general public identified certain areas where navigation is limited by the growth of aquatic plants. In the spring, curly leaf pondweed may limit navigation; and later in the summer, native aquatic plants may grow so thick that it is difficult to boat.

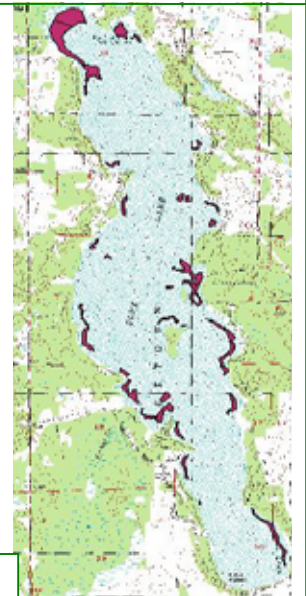
The Wisconsin Department of Natural Resources restricts the circumstances under which native aquatic plants may be removed. Areas for navigation must be identified in an aquatic plant management plan, and navigation must be severely limited before plant removal is permitted.

The plan explains a process where potential navigation channels identified in the plan will be re-examined in the spring and summer of 2008. A board member and volunteers from the lake will work with the DNR to understand when herbicide treatment may be allowed to alleviate navigation concerns. Herbicide treatment would occur only if navigation is severely impaired.

Managing Curly Leaf Pondweed

Curly leaf pondweed (CLP) is a non-native aquatic plant species already established in Bone Lake. It is not possible to eradicate this well-established plant. Instead, the strategy is to alleviate the nuisances it may cause.

Curly leaf pondweed grows early in the spring before native plants are actively growing. It is possible to treat this plant with low doses of the herbicide Endothall early in the growing season and not affect native plants. There are four areas in Bone Lake totaling fourteen acres where this selective early season herbicide treatment was carried out in 2006 and 2007. The plan calls for continuing this treatment in 2008 and 2009, then monitoring success. Meanwhile, if curly leaf pondweed causes severe navigation problems in May and early June, early season treatment may be used to alleviate these concerns. This treatment would not begin until 2009 if spring navigation problems are identified in the navigation channels described above in 2008.



CLP Beds in 2007

Protecting Native Plants

The plant community in Bone Lake is very diverse and extensive with 40 species of native aquatic plants identified in the 2007 plant survey. Naturally occurring native plants provide a diversity of habitat, help maintain water quality, sustain the fishing quality for which Bone Lake is known, and support common lakeshore wildlife from loons to frogs. Aquatic plants also provide protection from shoreline erosion, and healthy native plant populations prevent colonization by invasive plants.



Extensive removal of native plants would lead to adverse effects in Bone Lake. Where herbicide treatment is recommended in the plan, it is selectively used to impact only invasive species, or treatment is limited to where there are significant nuisance conditions. This provides the balance between managing for the benefits native plants provide and the nuisance conditions they sometimes create.

Education for Residents

The plan continues the strong education efforts already established with the aquatic invasive species subcommittee. Watch for updates about plan activities and information about native and invasive plants in workshops, the newsletter, and on the web site: www.bonelakewi.com. There are many opportunities for involvement.

If you have treated your waterfront with herbicides in the past, changes are coming.

The Department of Natural Resources will restrict the use of herbicides to manage native aquatic plants along the waterfront to those with serious nuisance conditions.

The enclosed letter from the DNR explains their permitting process for waterfront herbicide use. The Bone Lake Management District will keep lake residents informed regarding thresholds where treatments are allowed as more information is available.

Remember, DNR permits are required for any herbicide application in the water. It is the landowner's responsibility to obtain the permit in cooperation with their herbicide applicator.

With these additional restrictions in place and the concern regarding establishment of invasive species, consider hand removal techniques such as raking if you wish to maintain an opening for swimming and boating in front of your residence.

Important Contacts:

APM Board Lead

Dick Boss – 715-857-5755

AIS Subcommittee Chair

Phil Foster – 715-857-5304

Monitoring Coordinator

Bob Boyd – 715-857-5495

Clean Boats, Clean Waters Coordinators

Phil Foster – 715-857-5304

Rich Ihrig – 715-857-6009

Plan Consultant:

Cheryl Clemens

Harmony Environmental

715-268-9992

APM Plan Public Meeting

**Learn more about plans for aquatic plant management
on Bone Lake**

Make your comments heard regarding the APM Plan

9 a.m., Saturday, May 17th
Wilkins Resort
1091 238th Avenue



Your Comments Are Welcome. . . .

Please send comments to our project consultant:

Cheryl Clemens
Harmony Environmental
516 Keller Ave. S
Amery, WI 54001

harmonyenv@amerytel.net

Comments will be accepted through Friday, May 16th.

To review a complete copy of the plan

Download a copy from the District web
site: www.bonelakewi.com

Request a CD or paper copy by calling or
emailing:
Mary Delougherty
715-857-5888

A copy of the plan is available to view at
Georgetown Hall (corner of Cty Hwy H
and I). Open Monday – Wednesday
8:00 – 11:00 a.m.

Includes Bone Lake Waterfront Property
Owner Survey Results!

Thanks to Aquatic Plant Management Committee Members and Advisors!

Commissioners

Dick Boss
Bob Murphy
Bill Jungbauer
Mary Delougherty
Dale Vlasnik

Advisors

Amy Kelsey, Polk
County LWRD
Frank Koshere, DNR

Committee Members

Bob Boyd
Joe Christensen
Alex Chorewycz
Phil Foster
Rich Ihrig
Tim Killeen
Pat Michaelson
Ron Ogren
Brian Paulsen
Mary Jo Pickering
Wayne Schneider